



# ChocEtiqu

Windows Software for  
prepackaged food labelling



Producers of pre-packaged products (pastry chefs, chocolatiers, bakers, butchers, caterers,...), confide to **ChocEtiqu** software tedious tasks of mandatory labeling :

- Enter your recipes,
- Print immediately **labels** for **composition** and nutritional values, individually or in large series.

Ingrédients : sucre, **noisette (16 %)**, **amande**, beurre de cacao, chocolat noir, chocolat lait 35 %, chocolat noir 65 %, **pistache**, farine de froment, **farine de blé**, **beurre**, cassonade, **lait**, **oeuf**, **lécithine de soja**, **jaune d'oeuf**, E 322, arôme naturel vanille, cannelle, levure chimique, quatre épices, lécithine de colza, sel  
Risques d'allergie : noisette, amande, pistache, céréale contenant du gluten, lait, oeuf, soja  
Prix au kg : 66,00 € 250 gr 16,50 €  
A consommer de préférence avant le  
27 avril 2015

Valeurs nutritionnelles	Pour 100 gr	1 portion (10 gr)
Energie	339 kcal	34 kcal
Protéines	10,9 g	1,1 g
Glucides	47,8 g	4,8 g
dont Sucres	41,4 g	4,1 g
Lipides	32,8 g	3,3 g
dont AG saturés	5,1 g	0,5 g
Fibres	4,6 g	0,5 g
Sodium	< 0,1 g	< 0,1 g

1 portion (10 gr) contient				
Energie	Sucres	Lipides	AG saturés	Sodium
34 kcal	4,1 g	3,3 g	0,5 g	< 0,1 g
6 %	5 %	5 %	3 %	0 %

## Because **ChocEtiqu**

- automatically calculates the list of ingredients,
- adds allergy indications and special mentions
- calculates and adds other mandatory information (dates, prices, ...)
- calculate the nutritional values and daily nutritional guidelines
- prints on any Windows labels and printers (laser, inkjet, ribbon, thermal label printer, ...)
- with possible details of the producer, logo, photo, barcode EAN 7 or 13, etc ...

## considering

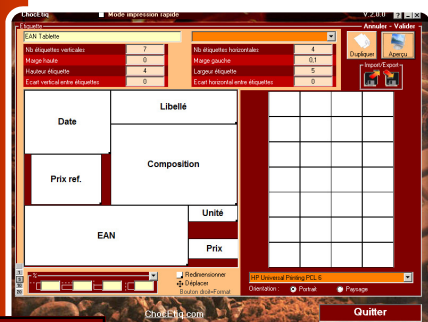
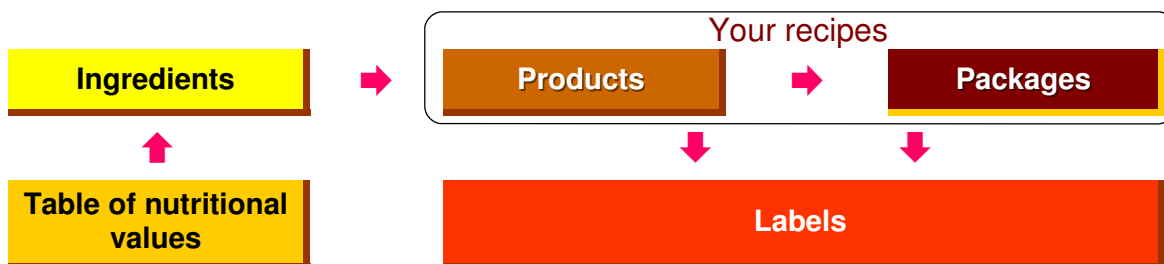
- The main rules of the Consumer Code and European directives related concerning the mandatory compositions, allergens, use by date, etc.
- And tables of nutritional values and/or daily nutritional markers, calculated on the nutritional composition table for foods Ciquel 2013, provided by *Agence nationale de sécurité sanitaire de l'alimentation, de l'environnement et du travail* (Anses).

## You keep your total autonomy

- locally managing your recipes total privacy,
- designing your own label's formats,
- using your current computers and printers without Internet connection required

## With simplified tasks by

- fast and always saved seizures,
- the supply with the application of a general table of ingredients and known nutritional values.
- details of all calculations.



More details on  
[www.chocetiqu.com](http://www.chocetiqu.com)

The functionalities of this application are limited to those described in documentation, and the user to be ensured of the validity of suggested information, under his own responsibility.



PC

Software for PC computers  
Windows 98 / 2000 / NT4 / XP / Vista / Seven / 8



# ChocEtiqu

## Offer 1

### ChocEtiqu Software

245 € HT (294 TTC)

## Offer 2 (France)

### ChocEtiqu Software + Printer Brother QL-720NW

415 € HT (498 € TTC)

## OFFER 1

The downloaded 'free' version is, at installation, limited : complete version need to acquire a user license at price of **245 €** without VAT (meaning 294 € with VAT), materialized by furnishing a user name and a password.



This information allow, after installation, launching and seizure of this elements on a computer connected to internet

- to use all functions of application
- to access to eventual updates of application during two years

Ordering **ChocEtiqu** license can be made by check or credit card (secure payment).

- All order is made with an invoice of 245 € without VAT (294 € with VAT 20 %), accompanied with username and password allowing access to server.
- No material support is furnished with order, because software is fully downloadable, and demo version becoming completely functional with username and password.

## OFFER 2

This offer (for France only) includes

- software of **offer 1**,
- **and Brother QL-720NW printer**, professional wireless

- Thermal Printing
- USB connection, Wifi or network cable
- Maximum print width 59 mm
- Automatic cutting, etc.
- Compatible with Windows XP SP3, Windows Vista, Windows 7, Windows Server 2003/2008, Windows 8



- All order is made with an invoice of 415 € without VAT (498 € with VAT 20 %),
- Printer is directly delivered at your address without additional shipping charge.

(1) The supplied printer model may evolve, with new model of manufacturer, towards a more efficient model.

The update of the application includes upgrade of the application, printed reports, nutritional values according to the Ciquial Database <sup>(2)</sup>.

After two years, you can continue updating application, with an annual subscription of 120 € without VAT (144 €), at end of the two years included in the initial offer.

For more information, complete documentation, downloading software, label's samples... see at <http://www.chocetiqu.com>

[Home](#)

[Download](#)

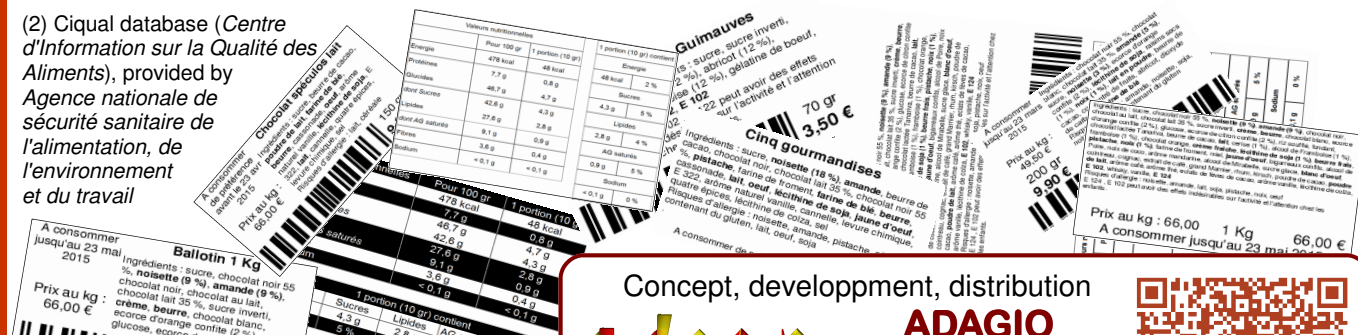
[Order](#)

[Help](#)

[Frequently asked questions](#)

[Contact](#)

(2) Ciquial database (Centre d'Information sur la Qualité des Aliments), provided by Agence nationale de sécurité sanitaire de l'alimentation, de l'environnement et du travail



Concept, developpment, distribution

**ADAGIO**

1, rue de la Gare  
54450 BLÂMONT  
FRANCE

Tél : 03.83.42.39.73



<http://www.chocetiqu.com>

[contact@chocetiqu.com](mailto:contact@chocetiqu.com)